



GATEWAY

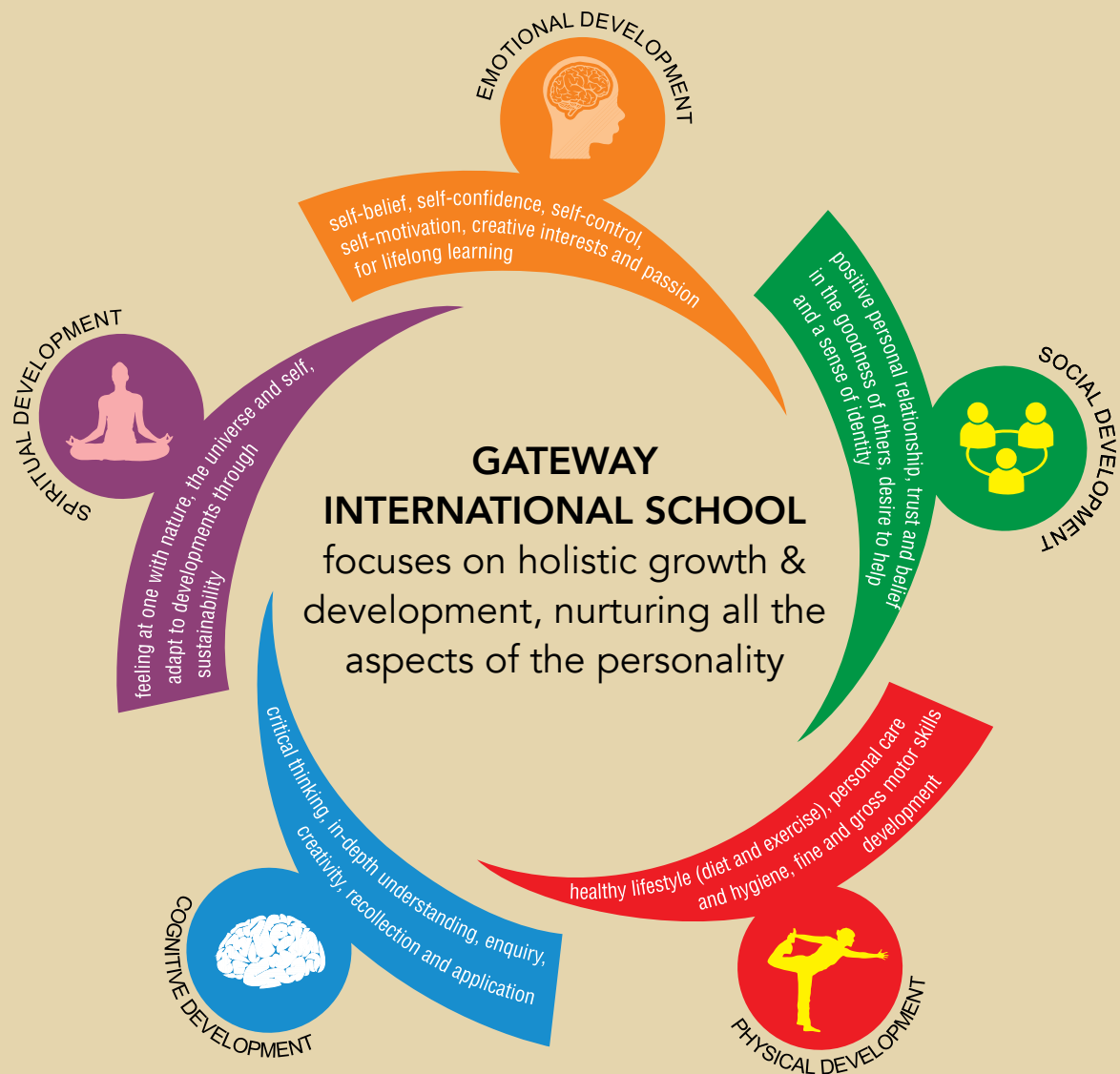
INTERNATIONAL SCHOOL

(An Experiential Learning School)

LEGACY OF EDUCATIONAL EXCELLENCE



PROSPECTUS



Gateway International School is a premier educational institute, located in a serene and sprawling 32 acres campus in Sector 11, Sonipat and has been functioning successfully since 2006 onwards. The school building stands tall and magnificent in its majestic splendour, not just in physical terms, but also, in its undeniable formidable reputation for providing quality education to its students. The state-of-the-art infrastructure is accentuated by beautiful landscaping, manicured lawns and a well maintained games and sports field.

GIS is an experiential learning English school affiliated to CBSE Board. This is a Day boarding-cum-Residential school. The school is managed by eminent educationists, intellectuals and prominent professionals as members of the Managing Committee and the Advisory Board.

MANAGEMENT COMMITTEE



Gateway International School is the dream project of Sh. H.P. Mangla, The Chairman of the institution. His pursuit for excellence is never ending. He has a vision of making a chain of world class educational institutions providing rich and wholesome learning experiences to those under this umbrella. A businessman and a philanthropist of high repute, he leaves no stones unturned to provide quality to every area under his supervision.

Mr. H.P. Mangla
CHAIRMAN

Mr. Rakesh Aggarwal, a reputed architect, a businessman and a humanitarian of towering status, is the life line of Gateway Group of institutions. He is actively involved in propelling the school towards achieving its aim. He believes in and works towards helping the institution reach soaring heights beyond his own dreams and aspirations.

Ar. Rakesh Aggarwal
EXECUTIVE CHAIRMAN



The scion of the Mangla family, Mr. Rahul Mangla is a man of rare entrepreneurial skills and a vision which believes his youth. A man with foresight and deep wisdom, Mr. Rahul completed his schooling from Birla Public School, Pilani. He went on to graduate in Computer Science & Engineering from Rashtriya Vidhyalay College of Engineering (RVCE) Bangalore. He has a Post Graduate degree in Family Managed Business (PGFMB) from S.P. Jain Institute of Management and Research, Mumbai. The school has blossomed into a multi-dimensional educational institution under his leadership and management.

Mr. Rahul Mangla
EXECUTIVE DIRECTOR

Ms Pallavi Mangla, a Post Graduate in Fashion Design Industry from Pearl Academy, New Delhi is an integral unit of Gateway International School. She has completed her schooling from Lancer's Convent School, Delhi and holds a prestigious undergraduate degree from the University of Delhi. She works closely in the regular matters of maintaining school decorum; building a standardized practise of performance and over all behaviour. Her keen outlook acts as a boon for the Gateway Group of Institutions and we look forward to her guidance in enhancing the school qualitatively.

Mrs. Pallavi Mangla
DIRECTOR



THE LEADING LIGHT



A school is a place where one learns about the totality, the wholeness of life. Academic excellence is absolutely necessary, but a school includes much more than that. It is a place where both the teacher and the student explore, not only the outer world, the world of knowledge, but also their own thinking, their own behavior.

-J. Krishnamurti

Mr. Prem Kumar Ojha, a dynamic leader, a reflective practitioner and a motivator is a force to reckon with. His vision is to develop holistic responsible citizens who can cater to the needs of the rapidly transforming society, who are tech-savvy yet able to fend for themselves keeping in mind the sustainable means of development. He has effectively transformed the school into a rapidly progressing institution.

VISION

- To concoct and nurture citizens of tomorrow – rounded, rooted to the soil reaching out to the future.

MISSION

- To ensure an environment facilitating holistic learning.
- To foster a culture of teachers as mentors, collaborators and active participants.
- To instil self-awareness.
- To equip with knowledge, innovation and life skills.
- To encourage the realization of optimum potential.
- To prepare for risks and challenges.
- To nurture social responsibility with individuality.

CORE BELIEFS

- It is a step into the world of quality education that provides and maintains:
 - ...excellence driven by values
 - ...success strengthened by ethics
 - ...modernity fortified by tradition



'Creating Progressive Thinkers'

We envision the GIS child to be an integrated, conscientious global citizen, a learner through life and a creative and collaborative problem solver who looks at the world from many different perspectives, and meets the real world interests, needs and challenges. Since we are a part of Progressive Education Movement, we hold the following common values with other progressive methodologies.

- Emphasize learning by doing and provide hands-on projects and opportunities
- Design integrated curriculum focused on thematic units
- Educate for social responsibility and democracy
- Integrate community service in daily curriculum





A Robust and Engaging Curriculum

"Children are born with immense potential, what matters most is the way they are nurtured."

Our curriculum supports growth in the cognitive, language, socio-emotional, physical and spiritual domains. As an institution of learning, we provide a caring, healthy and challenging environment aiming for quality education with a global outlook and concoct productive and awakened citizens of tomorrow.

Experiential Learning



Gateway International School has taken the lead to adopt Experiential Learning which is joyful, engaging, motivating and purposeful. It will not just enable our young minds to think but their hearts to experience the joy in learning, resulting in a marvellous and enriching experience. Experiential learning focuses on practical application of knowledge and skills to real-world experiences to further increase learner's knowledge and develop competence in skills and behaviours.

Children are born eager to learn by doing, and a healthy supply of that instinct survives at least in young learners. At GIS, students carry out an 'Integrated Project' in each term where they learn different subjects at the same time. It focuses on learners reflecting on their experience of doing something, so as to gain conceptual insight.

Internshala



Academic internships are a bridge to link the theory and practice by taking part in supervised and scheduled work. These internship programs not only improve students' personal skills but also polish their professional growth and experience.

GIS has introduced the concept of Internshala for the students of Grade IX-XII wherein the students get an industrial exposure to learn industrial skills and integrate the same with their conceptual knowledge in the new world of work.

Students of Commerce are already learning Tally and other essential advance tools for Accounting and Business implementations. Students of Science and Humanities are provided with an exposure to Industrial training and visits to different departments to gain handful of working knowledge to be used and applied in the real-time and making them more proficient and efficient global successful citizens.

A close-knit Gateway family includes school of Architecture, Hotel Management, College of Engineering, along with "Rishihood University" focussing on skills like Entrepreneurship and 21st Century workforce needs, providing them an immersive curriculum, conducive environment and suitable platform to perform all the practical aspects of the same with the view on creating social impact.

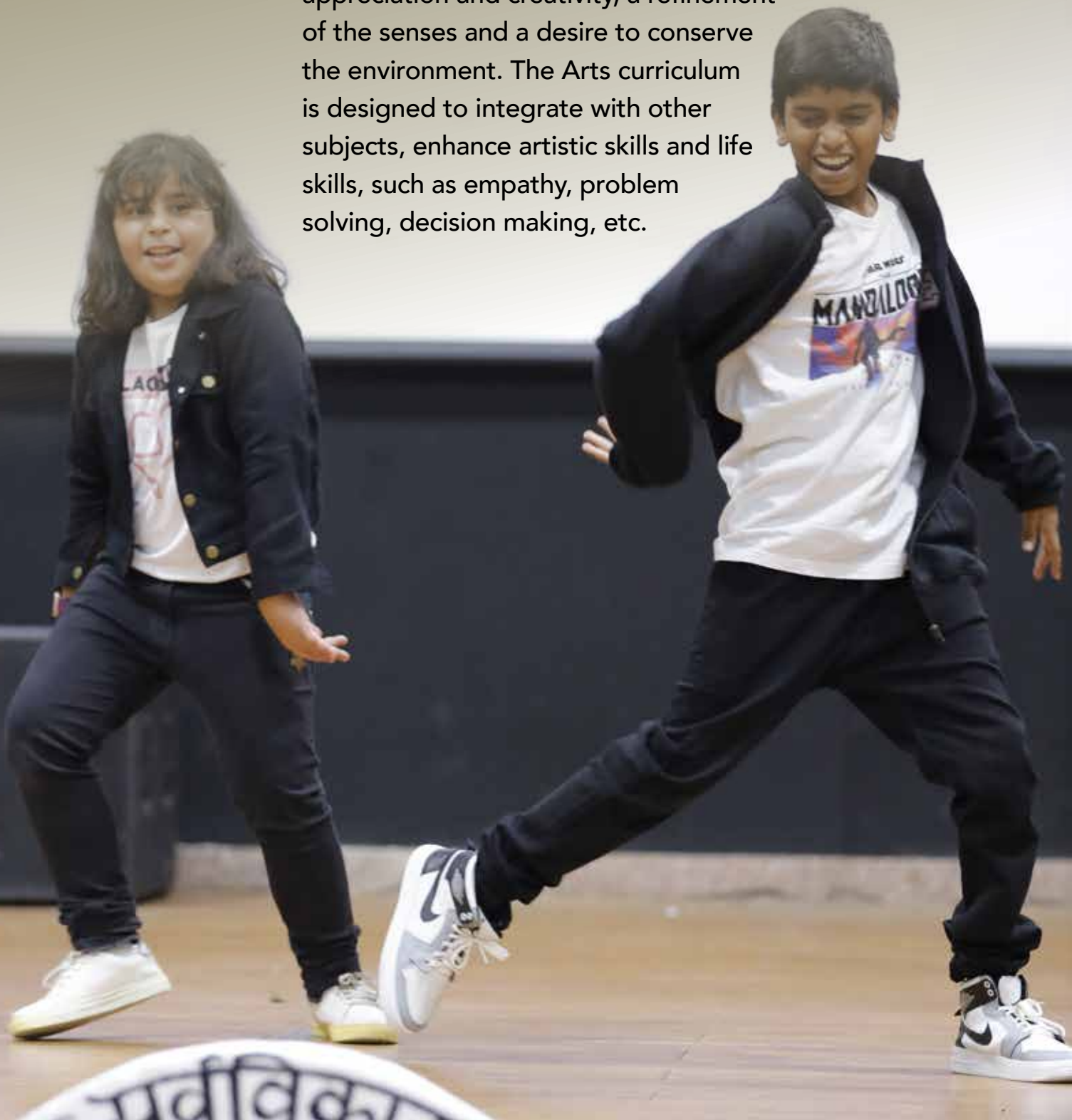


more Gratitude, less Attitude...

To develop the non-material, spiritual aspects of life, we, at GIS focus on personal insight, values, meanings and purpose, experience the "awe and wonder" of life, the courage and ability to persevere and overcome inner resistance and vacillation. The larger purpose is to create individuals who remain in touch with their inner being.

freedom to pursue Passion...

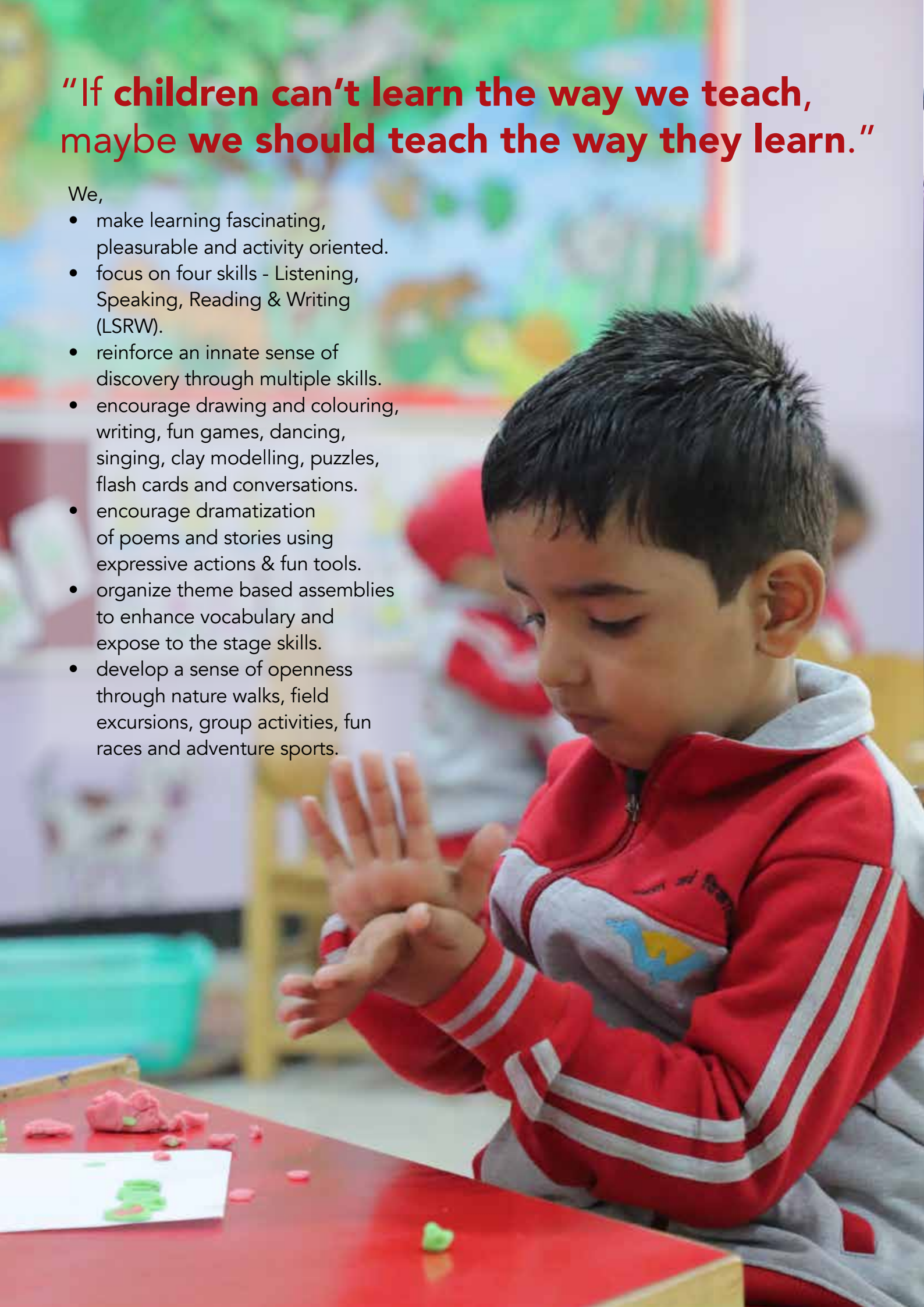
At GIS, art thrives in its visual and performing forms, covering a diverse range of activities and modes of expression. Here students understand their heritage and combine it with a vision of the future, develop aesthetic appreciation and creativity, a refinement of the senses and a desire to conserve the environment. The Arts curriculum is designed to integrate with other subjects, enhance artistic skills and life skills, such as empathy, problem solving, decision making, etc.



**"If children can't learn the way we teach,
maybe we should teach the way they learn."**

We,

- make learning fascinating, pleasurable and activity oriented.
- focus on four skills - Listening, Speaking, Reading & Writing (LSRW).
- reinforce an innate sense of discovery through multiple skills.
- encourage drawing and colouring, writing, fun games, dancing, singing, clay modelling, puzzles, flash cards and conversations.
- encourage dramatization of poems and stories using expressive actions & fun tools.
- organize theme based assemblies to enhance vocabulary and expose to the stage skills.
- develop a sense of openness through nature walks, field excursions, group activities, fun races and adventure sports.





***"Students active outside the classroom
do better inside the classroom."***

The school has a dedicated sports & physical education program to expose children from a young & tender age. Specialized instructors and coaches from various disciplines build players to grow, excel & succeed in real life.

Designed in concordance with the norms, the Swimming Pool, Lawn-Tennis Court, Basketball Court, Skating Rink and Cricket Pitch adorn the campus thereby providing innumerable opportunities.

***"Play a Sport.
It will teach you how to win
honourably,
lose gracefully,
respect authority,
work with others,
manage your time and
stay out of trouble."***

Facilitators of Learning...



The School Libraries

GIS has always laid great emphasis on inculcating the habit of reading in its students, right from the Dear Corner of the Primary wing. The libraries are well stocked which help to feed the eager minds of the young students, by giving them the right medium for knowledge and awareness, in the form of attractive and informative books.

Senso-Motor Lab

GIS Juniors aims to help children develop the skills necessary for learning readiness and mastery of the environment. These skills are based on children's ability to manoeuvre and function in their environment. The more aware the children are of their environment and the effects of their actions, the better they can control themselves and accomplish tasks.



Computer Labs

The computer labs are well fitted with the latest state of the art equipment and an IT staff which transforms our youngsters into tech-savvy millennial.



Ekam Auditorium

The Ekam Auditorium is a 'happening' place. It is equipped with the most modern state of the art audio visual facilities and a massive seating capacity of approximately 1000. The sound proof auditorium hosts a multitude of events and functions.

Sanjeevani - The Infirmary

Sanjeevani - the lifeline of the school is the Infirmary, where students are given instant medical aid and a time-to-time physical check-up, supervised by team of doctors.





Day Care

'A structured environment with trained teachers to administer, care and educate.'

At Day Care, we provide supervision and care to our Tiny-Tots where they stay and rest after school so that their parents can keep up with their engagements.

Innovation / Robotics Lab

The Robotics Lab caters to the areas of science, technology, engineering, art and math (STEAM) and aims to build a strong base in computer programming and artificial intelligence among students. It focuses on – Branches of Robotics, Robotics in modern life and its components and reaches out to the future.



Physics Lab

Physics laboratory is well equipped laboratory where students learn to practice the activities of scientists – asking questions, performing procedures, collecting data, analyzing data, answering questions, and thinking of new questions to explore. We have Vernier Calliper, Micrometer Screw Gauge, Lens Mirror Prism, Resistance Box, Stop

Chemistry Lab

Study of chemistry is not possible without a Laboratory. Students learn by "learning by doing method" which is the best method. Chemistry Lab is well furnished, well designed and well equipped with Apparatus and chemicals. All safety measure (Fire sensor, fire Extinguishers) and first Aid Box are placed in the Lab.



Bio Lab

Bio-Biotech Lab is very well equipped where students gain a practical knowledge and proved their scientific aptitude. All Molecular techniques, optical instruments are helpful for the students of Biology

Geography Lab

Geography is the study of places and the relationships between people and their environment. Geographers explore both the physical properties of Earth's surface and the human societies spread across it. School has well equipped geography Lab with globe and Map (Related to World, Asia, India and Haryana).



Students' Endeavours at GIS...

GIS Youth Parliament

GIS Youth Parliament provides an opportunity to young leaders to articulate specific people's related issues and most importantly to share their perspectives on the matters of National as well as local importance. Through GIS Youth Parliament, young minds develop active citizenship. We intend to create a platform for our children to learn about the workings of the United Nations, as we firmly believe in preparing the future generation to unite together and bring global changes.

GIS MUN (Young Leaders' Conclave)

GIS MUN aims to establish an extraordinary ground to empower the students to become diligent towards the matters of society. It is an intellectual experience for the students to participate in a forum, specially designed to deal with issues of global concern. GIS MUN is an initiative to make students able thinkers and prepare them to practice sound leadership in the future and effectively fulfill Sustainable Development Goals.



Global School Dialogue

"GIS Global Dialogue" forum is a platform to analyse, discuss and share the problems faced worldwide. Students and delegates from all across the world have discussions on issues like 'Gender Violence', 'Rights of women' and 'Lets Heal the Earth and be the Change' i.e., Climate Change.

Renowned Organisations like "FOGGS"-Foundation for Global Governance and Sustainability and "The DAIS" have been actively participating and supporting the same.

Abhivyakti (Literary Fest)

Gateway International School is determined to groom students in a holistic manner, and thereby annually hosts "Literary and Cultural Fest" ABHIVYAKTI for enhancing the Integration of Arts in different forms of reading, writing, thinking, logical skills and performing art skills which go a very long way in shaping an individual. The event witnesses participation from across various schools of Delhi-NCR.



Celebration of Learning

Project Based Learnings

Project Based Learning is the experiential approach in its dynamic form at Gateway from Grade Ruby to Grade 8. It is the learning by doing way of developing the skills of the learners by exposing them to a spectrum of experiences in and around school campus.

Each Grade is assigned two projects in a session. At the end of each project the learners along with their teachers plan together a culmination. The culmination stands as a witness of the enriched journey, their learning outcomes as a working product



Adventure Camp, Educational Excursions & International Visits

Adventure Camp organised annually is an event filled with fun, joy and frivolous activities. It provides a safe, happy, joyous and learning environment to the children to nurture their growth and learning. They learn the importance of team work and the camp exposes them to a variety of challenging yet fun activities.

Inside the classroom, a student gets to know about new things, new ideas, and new concepts, while outside the classroom, a student explores and experiences. When learning is accompanied by fun, excitement, and enjoyment, it stops being burdensome and boring, and students learn as a part of their natural growing up process.

As students travel to different places, they interact with different people and develop amazing social skills and networks. They learn the norms of acceptable social behavior in different circumstances and learn to extend a hand of friendship to people from different culture, socio-economic backgrounds. This develops the most sought out people- skills in them.



Residential Life at Gateway

The Campus has three hostels namely, Shivalik, Aravali and Kaveri which provide separate air-conditioned rooms for boys & girls.

Multi-storeyed hostel has an in house laundry, separate saloons for boys and girls, audio visual room, common room for indoor games and internet connected computer access.

A well protected security system ensures complete safety and security inside the campus.

The resident students are guided and supervised by an expert warden and an academic coordinator. The general health, academic progress and other areas of development are closely monitored and periodic reports are furnished to the parents



regarding the welfare of their dear ones.

The food served to children is grown on the fields in the campus which ensures supply of completely organic, healthy and vegetarian meals.

Special emphasis is laid on personal grooming and language development. To inculcate moral and cultural values and keep our children connected to the roots we have Yagyashala and Gaushala where children visit on regular basis.

Weekend hobby classes, short outing and recreation are periodically planned to make the residential stay interesting.

Initiatives are being taken to prepare senior school children for all the competitive examinations that they will need to face for higher education.

Residential status is given to students only from Class IV upward falling in the age group of eight years and above.

Ekam Dining Hall



Well ventilated modern kitchen, dining hall equipped with massive sitting capacity is available. Balanced diet is provided under hygienic conditions. The menu for the mess includes a wide variety of foods to provide complete nutrition to the students.

Academies at GLS

The school has a dedicated sports & physical education program to expose children from a young & tender age. Specialized instructors and coaches from various disciplines build players to grow, excel & succeed in real life.

Designed in concordance with the norms, the Swimming Pool, Lawn-Tennis Court, Basketball Court, Skating Rink and Cricket Pitch adorn the campus thereby providing innumerable co-curricular activities and ample opportunity to exercise and train themselves under expert guidance and coaching.





WORLD CLASS
INFRASTRUCTURE



ACADEMIC
EXCELLENCE



LIFE SKILLS LAB



SMART DIGITAL
CLASSROOMS



SPORTS



SPIRITUAL
DEVELOPMENT



UNIVERSAL
VALUES



ROBOTICS



SUSTAINABLE
DEVELOPMENT GOAL
LAB



EXPERIENTIAL
LEARNING



POTTERY
LAB



COMPUTER
LAB



THEATRE



ADVENTURE
ACTIVITIES



AMPHITHEATRE



LIBRARY



MEDICAL
ROOM



WASTE
MANAGEMENT



SAFE & SECURE
ENVIRONMENT



LANGUAGE LAB

Our Associate Ventures



rishihood
university



- School of Creativity
- School of Education
- School of Healthcare
- School of Entrepreneurship



HRM
GLOBAL SCHOOL



- K-12 School, Delhi

GATEWAY
COLLEGE OF ARCHITECTURE & DESIGN



- B.Arch
- M. Planning

GATEWAY
INSTITUTE OF ENGINEERING & TECHNOLOGY



- B.Tech
- BCA
- BBA
- MBA



GATEWAY INTERNATIONAL SCHOOL

Sector-11, Sonapat (Delhi-NCR) Haryana - 131 001

Admission Enquiry : +91-98123 02389 • School Whatsapp No. : 9812302331

E-mail : enquiry@gateway.edu.in • Website : www.gateway.edu.in